

North Wandsworth Dialysis Unit

Hours of Opening

Monday – Saturday, 7.00 – 18.30

How to Find us

By Car

Heading southwest, leave the A203 south Lambeth road towards Vauxhall Grove. Keep right on to South Lambeth Road. Bear right on to A3205 Parry Street then bear left on to the A3036 Wandsworth Road. After about 0.97 miles, turn right on to Stewarts Road. Turn left into Battersea Business Park. The building on the right is North Wandsworth Dialysis Unit.

By Train

On the London Overground Line, the nearest train station is Wandsworth Road.

On the London Underground Line, the nearest train station is Vauxhall.

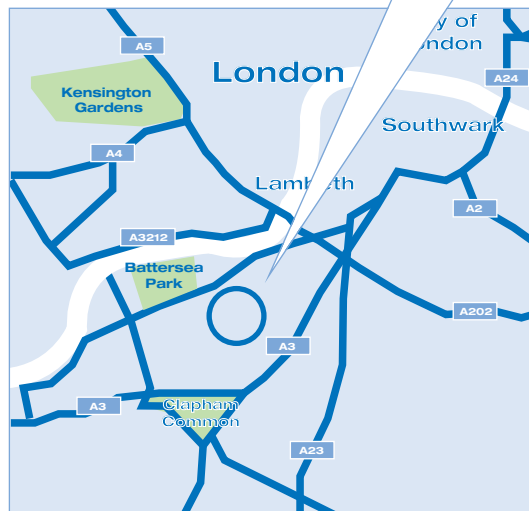
By Bus

The nearest bus stop is Union road via bus number 87 or 77 towards Tooting or Wandsworth from Vauxhall Bus Station.



Location

North Wandsworth Dialysis Unit
Battersea Business Park
Units 9 & 10
102-104 Stewarts Rd
London SW7 4UY



Clinics Head Office, Facet Road, Kings Norton
Birmingham B38 9PT England • Phone: 0121 486 4290
www.fmc-ag.com



North Wandsworth Dialysis Unit



North Wandsworth Dialysis Unit



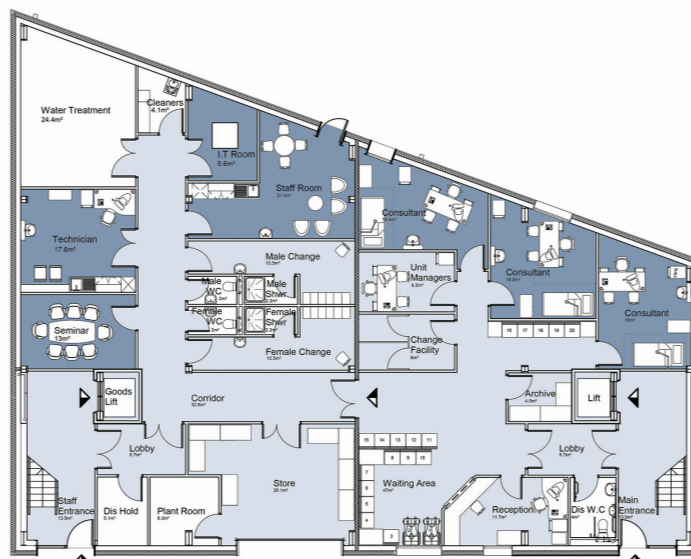
North Wandsworth Dialysis Centre is managed by Fresenius Medical Care Renal Services, in conjunction with St Georges Healthcare NHS Trust.

Working together with another new Dialysis Centre in nearby Collierswood, we have received positive feedback from patients.

Through the NephroCare® programme, Fresenius Medical Care Renal Services is delivering the highest standards of patient care through fully equipped, fully-managed dialysis centres.

The Way of Caring

- 18 dialysis stations designed to provide the highest level of care and comfort for the patient
- Friendly qualified staff and nurses with patient care at the centre of everything they do
- Including 2 side rooms, each with their own WC facilities. All stations fitted with a state-of-the-art 5008 dialysis machine
- Each station is provided with a fully adjustable electronic dialysis chair
- Each patient has an individual flat screen TV complete with Freeview channels and digital radio
- Free Wi-fi wireless internet connection for patients
- Dedicated entrance and 10 car parking spaces including 1 accessible space and ambulance access
- Holiday dialysis is available at this dialysis centre



UNITS 9-10 GROUND FLOOR PLAN



UNITS 9-10 FIRST FLOOR PLAN

The unit has been designed to meet the current standards for satellite dialysis units as outlined within the Department of Health's Health Building Note 07-01 and is also fully compliant with the Disability Discrimination Act (DDA) meaning that ease of access is ensured for every user.



Fresenius Medical Care
Renal Services Ltd